



*Share
Integrity
Education
Innovation
Professional*



2023 LIGITEK

立碁電子

Company Overview

Established : 1989

President : Jackson Tong

OTC No.: 8111 (Listed on OTC in 2004)

Employees : 202 (TW HQ), 350 (Dongguan)

Capital : 37M USD

Product lines : All LED related products
Manufacturing and Sale

Plants : ShuLin New Taipei (Taiwan)
DongGuan (China)



Certifications

Excellence

Excelling in professionalism with outstanding results and breakthroughs in company and employee improvement. Setting high performance goals, believing in our mission and taking accountability with courage.

Top Quality

Providing the most optimal and best quality solutions through consistent and continuous improvement. Our quality assurance system carefully monitors & documents from layout, design, procurement of raw materials, manufacture, packing to after-sale-service. We have gained certification of ISO14001, IATF16949, ISO9001 & ISO45001. Under constant appraisal, we meet and exceed our customers' requirements and totally support our products to meet high reliability.



IATF 16949



ISO9001



ISO14001



ISO45001



IES LM79 LAB

Greener and brighter

Global Sites



O.H. Tech
Dongguan



Taiwan

Ligitek Group
Ligitel Electronics Co., Ltd

O.H. Technology
LED Back Light

Ligitek
HK (Logistic)

LIGITEK

Production Capacity

Taiwan factory

SMD : 80KK/M

Assembly : 30K/M

PCBA: 2KK/M



Dongguan factory

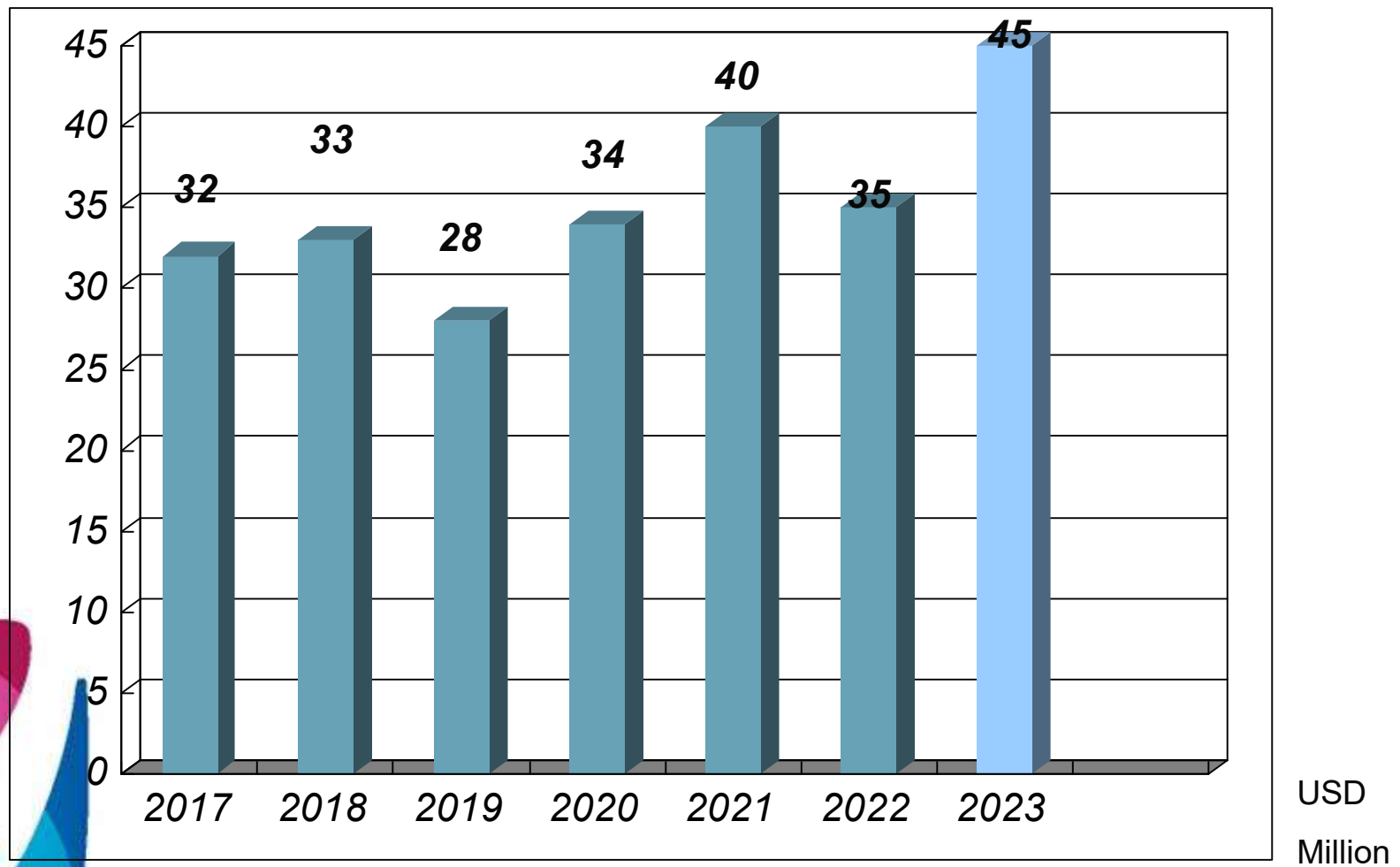
Lamp: 40KK/M

Display (7seg): 4KK/M

Backlight: 2KK/M

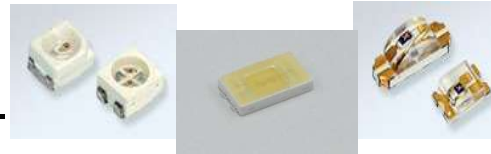


Turn Over Index (2017-2023 forecast)



Major Product Lines

- **Surface Mount LED** _____



- **LED Lamp and Display** _____



- **LED Array** _____



- **PCBA** _____



- **Backlight** _____



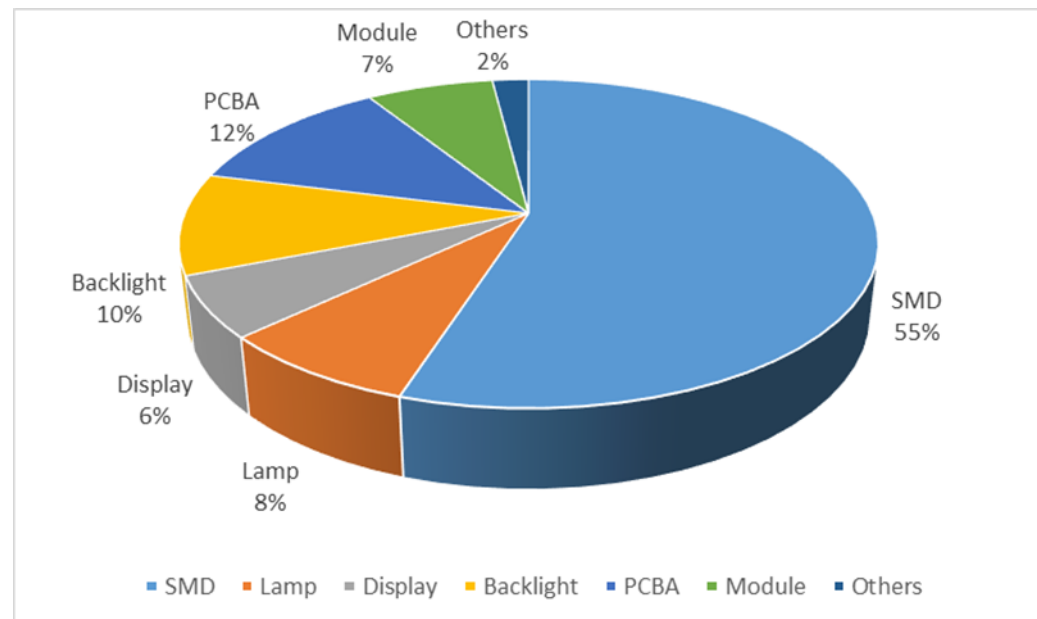
- **LED Modules** _____



LIGITEK

Application and product share

- **PCB SMD**.....Indicators, NB, USB, IT industry, CCTV
- **PLCC SMD**.....Gambling machine, Automotive, LED TV
- **LAMP**.....Indicators, signs, Traffic signal, Smart meters
- **Display**.....STB, house appliances
- **Array**.....STB, IT industry-PC, modem
- **PCBA**.....Light Bar
- **Module**.....HUD



Automotive LED

Greener and brighter



Automotive

Greener and brighter

A.	For Motorcycle		
	Brand	Application	LED Type
1	Harley-Davidson	Tail lamp	BAY15 Lamp- Amber, Red
		Turn Signal	BAY15 Lamp-Amber, Red
		Decoration lamp	1206 Side View SMD LED- White, Blue, Green, Red, Amber
B.	For Automotive (★-Before market, others-After market)		
	Brand	Application	LED Type
1	★Rang Rover	Running board	2808 Side view PLCC- White
2	★Hyundai (KIA)	Side Mirror	3020 PLCC-Amber, 2835 PLCC-Amber
3	★Lexgen	HUD	Customized HUD
4	★GM (Cadillac)	Running board	3020 PLCC-White
5	★VW	USB Charging	2808 side view PLCC - White
6	Peugeot	Taillight	5mm TH lamp- Red
7	Valeo	Dashboard	1206 SMD LED- Amber
8	Truck	Reversing light	piranha LED- White
		Third Brake light	5mm TH lamp- Red
		Inner Lighting	piranha LED- White
		Brake light	3528 SMD-Red
9	Malaysia local motor	Third Brake light	piranha LED- Red
10	Big Car	Brake light	piranha LED- Red
11	Nissan	Parking sensor	Display Bar- Red/Green/Amber
12	Mazda	Parking sensor	Customized Display- Amber

Addressable RGB LED

Greener and brighter

LIGITEK

RGB+IC LED
(Addressable RGB LED)

- Digital IC Control
- Perfect RGB Mixing Effect
- Simplified Circuit Design
- Smallest Digital Control LED
- Wide Color Gamut

110FRGB
3.2mm × 1.0mm × 1.5mm

3535FRGB
3.7mm × 3.5mm × 1.95mm

4516FRGB
4.5mm × 1.6mm × 1.7mm

197FRGB
1.6mm × 1.5mm × 0.55mm

5050FRGB
5.4mm × 5.0mm × 1.6mm

+886-2-7703-6000 ligitek@mail.ligitek.com www.ligitek.com



High Power IR LED

Greener and brighter



LIGITEK

QR Code

3535 High Power IR LED

- Power Dissipation : 1W~3W
- Viewing Angle : 45°、60°、90°、130°
100°/150°、60°/100°、30°/48°

886-2-7703-6000 ligitek@mail.ligitek.com www.ligitek.com

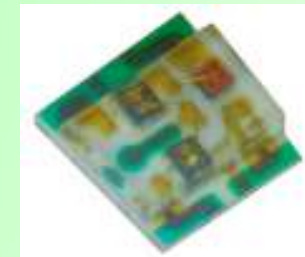
Traditional circle LED

Rectangular light pattern LED



MF192/MF195 SIGNAL CONTROL LED

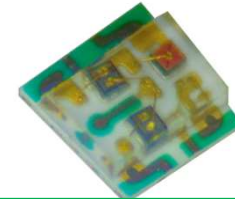
- ◆ Integrated control LED: Mosfet + LED
- ◆ Minimization control LED:
 - 1.6 x 0.8 x 0.4 mm(Single chip)
 - 1.6 x 1.5 x 0.55 mm(Dual chips)
- ◆ Reduce control circuit design space
- ◆ PCBA cost down: save Mosfet and SMT cost



Greener and brighter

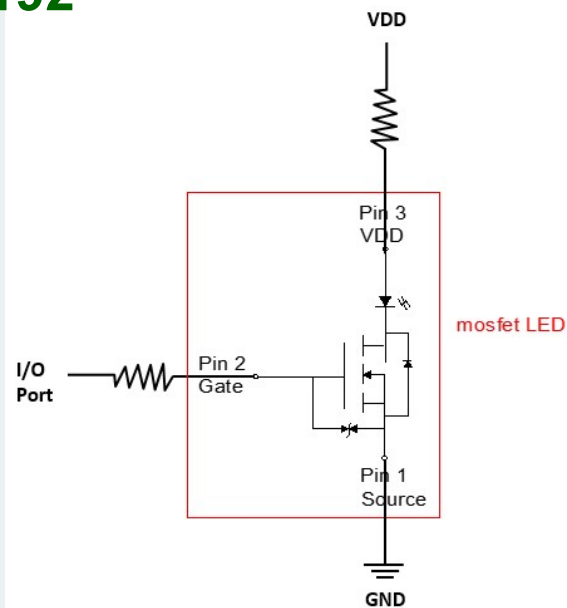
MF192/MF195 SIGNAL CONTROL LED

Control Circuit



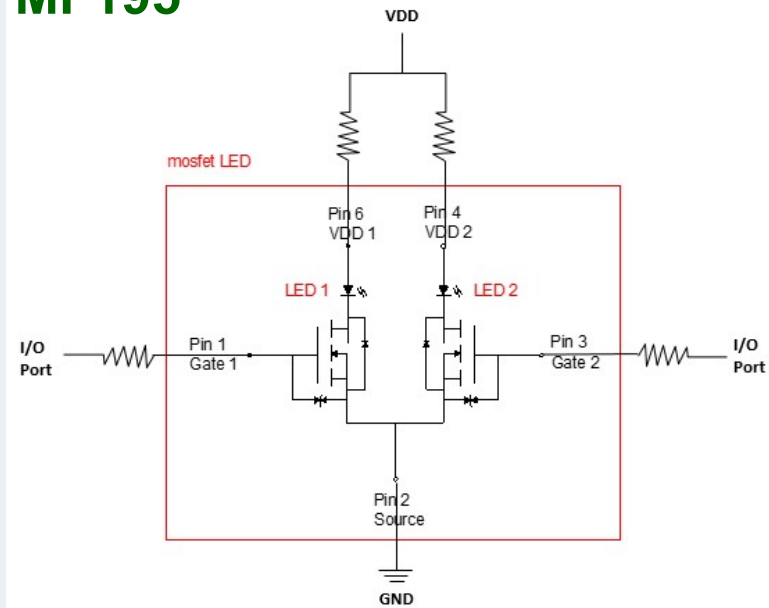
SINGLE COLOR MOSFET LED

MF192



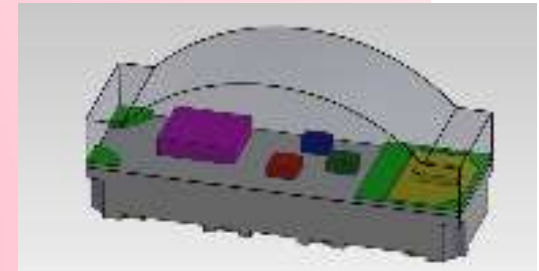
DUAL COLOR MOSFET LED

MF195



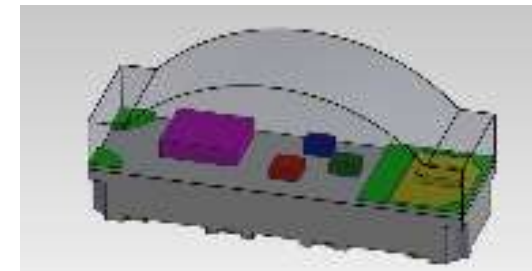
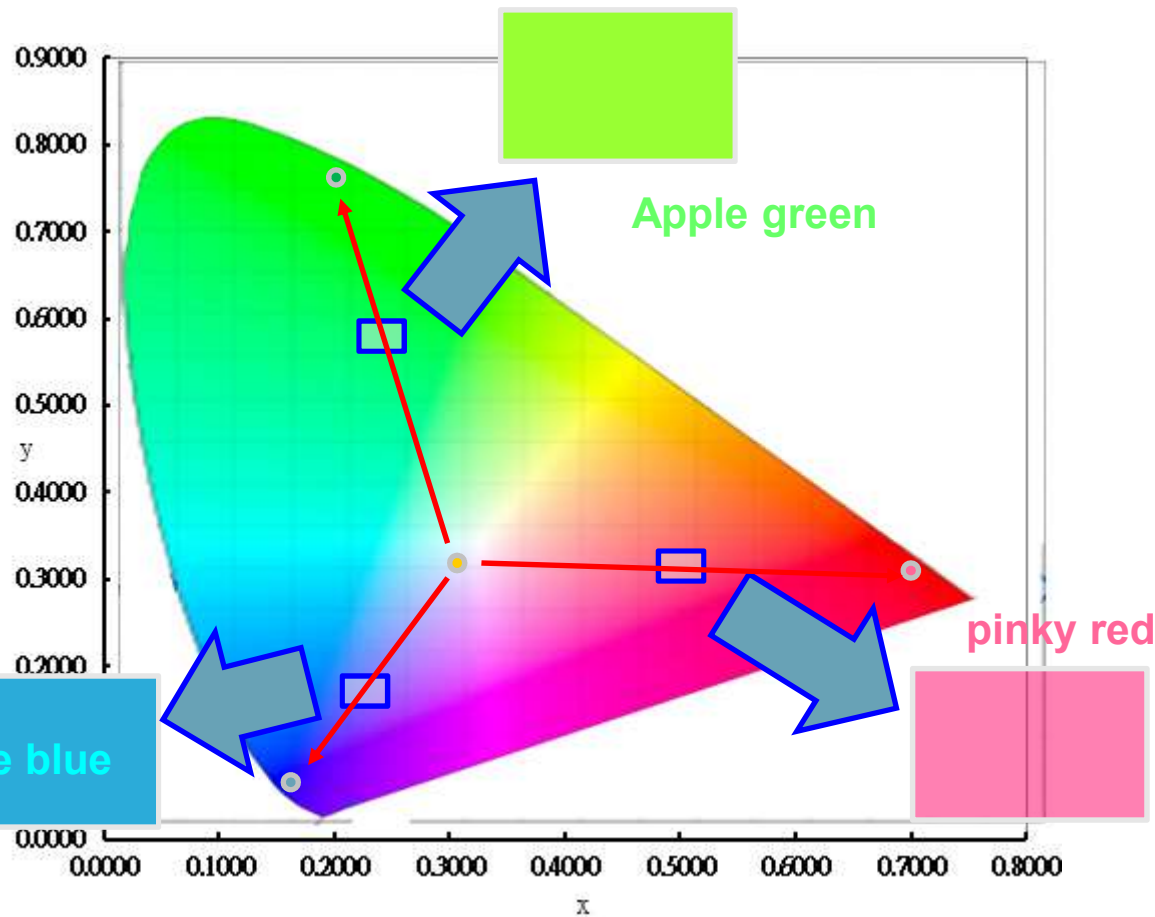
ARGBW LED

- ◆ High uniformity on white color
- ◆ High uniformity of mix colors / Easy to mix soft colors
- ◆ Simplify the firmware control of luminous efficiency on soft colors
- ◆ Single-line digital control the colors, simple circuit design

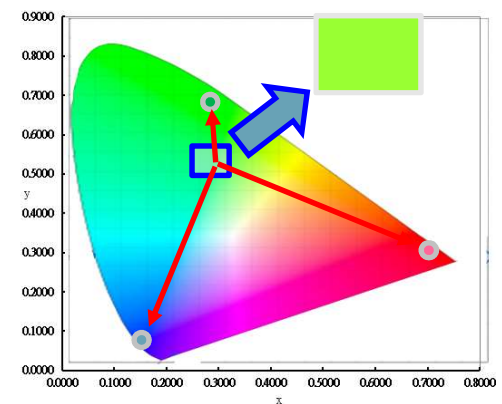


ARGBW LED

Greener and brighter



Normal ARGB LED



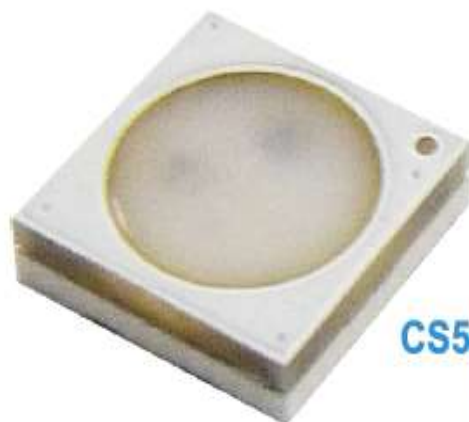
LIGITEK

TOUCH SENSOR WITH ARGB LED



Advanced Features

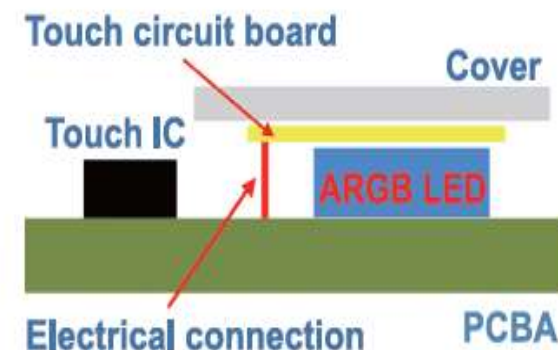
- Cost down
- Low power
- Auto calibration
- Stable touching detection



TOUCH ARGB LED



Traditional touch + ARGB LED

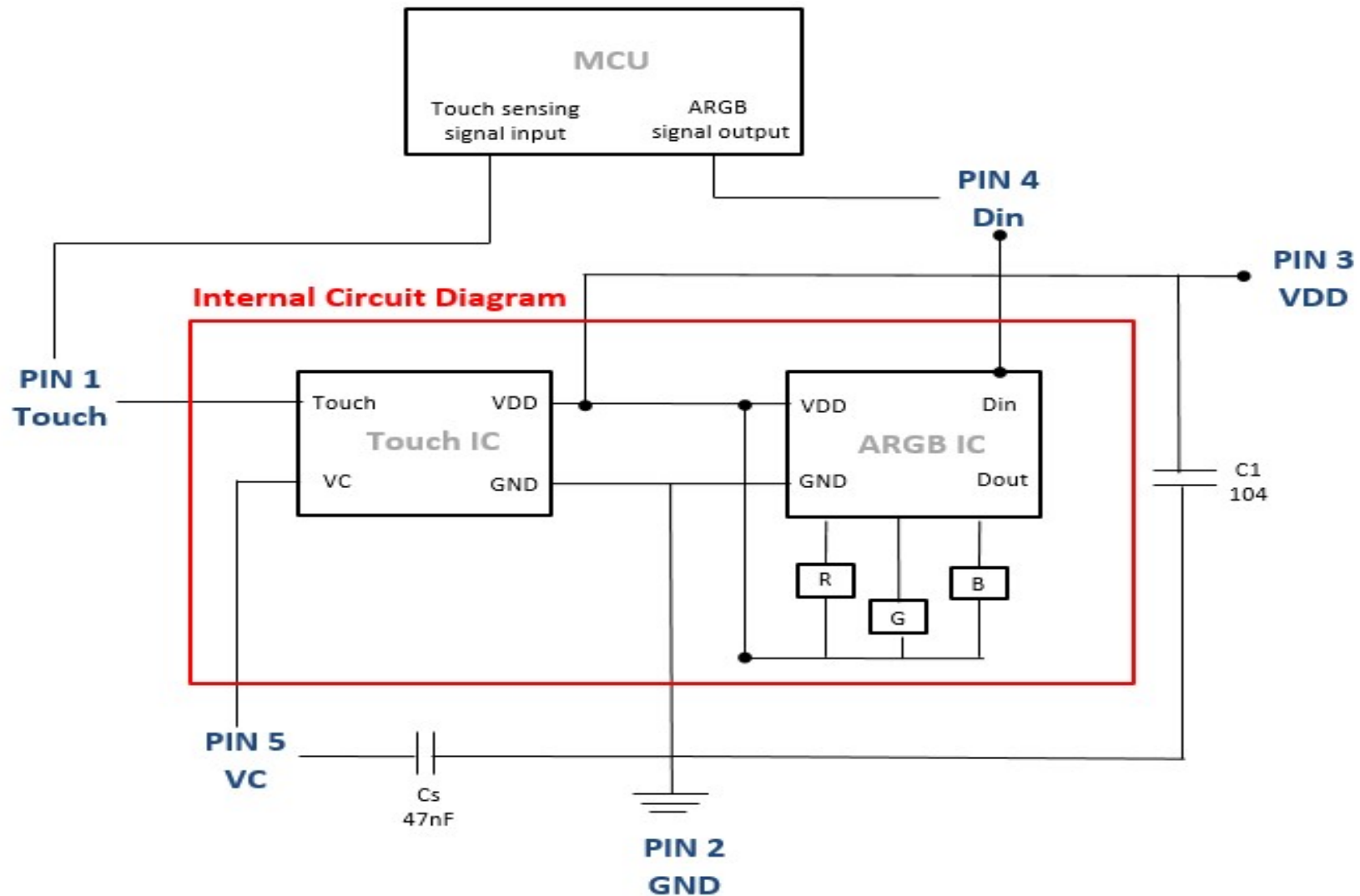


CS5050FRGB TOUCH ARGB LED

Greener and brighter

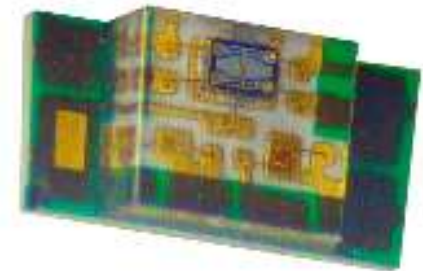


Control Circuit



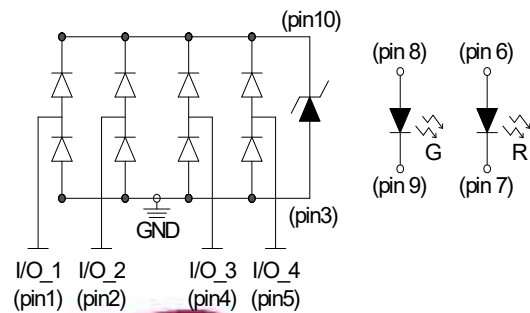
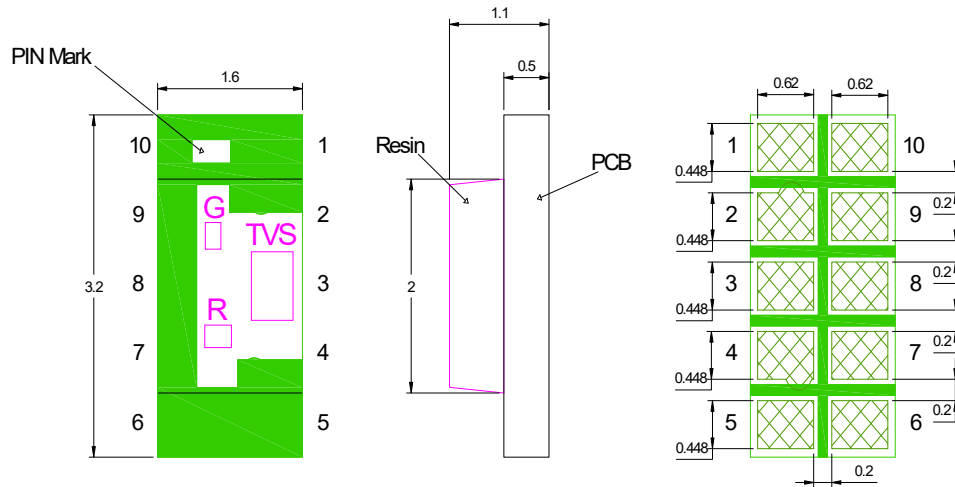
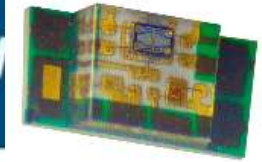
TVS150 LED

- ◆ Integrated LED: TVS + LED
- ◆ Minimization TVS + LED: 3.2 x 1.6 x 1.1 mm
- ◆ Reduce the design space of protection circuits
- ◆ PCBA cost down: No need TVS component and save SMT cost



TVS150 LED

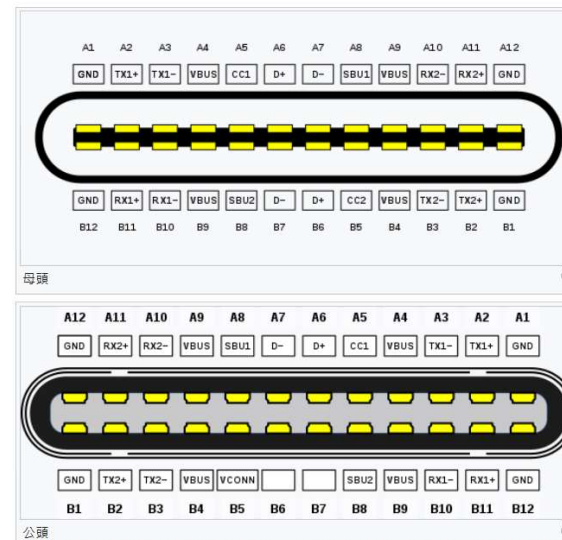
Greener and



USB- Type C cable

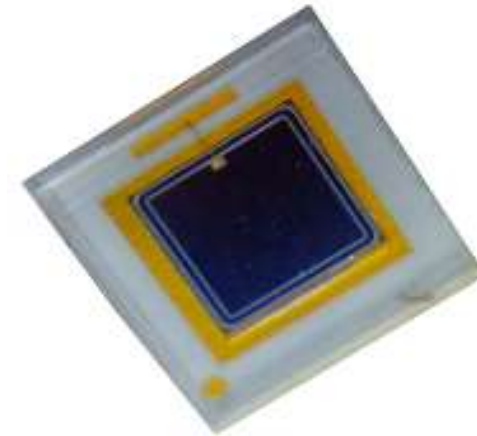
針	名	描述	針	名	描述
A1	GND	接地	B12	GND	接地
A2	SSTXp1	SuperSpeed差分訊號#1, TX, 正	B11	SSRXp1	SuperSpeed差分訊號#1, RX, 正
A3	SSTXn1	SuperSpeed差分訊號#1, TX, 負	B10	SSRXn1	SuperSpeed差分訊號#1, RX, 負
A4	V _{BUS}	總線電源	B9	V _{BUS}	總線電源
A5	CC1	Configuration channel	B8	SBU2	Sideband use (SBU)
A6	Dp1	USB 2.0差分訊號, position 1, 正	B7	Dn2	USB 2.0差分訊號, position 2, 負
A7	Dn1	USB 2.0差分訊號, position 1, 負	B6	Dp2	USB 2.0差分訊號, position 2, 正
A8	SBU1	Sideband use (SBU)	B5	CC2	Configuration channel
A9	V _{BUS}	總線電源	B4	V _{BUS}	總線電源
A10	SSRXn2	SuperSpeed差分訊號#2, RX, 負	B3	SSTXn2	SuperSpeed差分訊號#2, TX, 負
A11	SSRXp2	SuperSpeed差分訊號#2, RX, 正	B2	SSTXp2	SuperSpeed差分訊號#2, TX, 正
A12	GND	接地	B1	GND	接地

USB 2.0差分訊號只會連接其中一邊。因USB Type-c Plug 無B6、B7。



PD5050 SENSITIVITY COMPONENT

- ◆ High-sensitivity sensing component
- ◆ Low capacitance / High response speed
- ◆ High reliability performance of silicone package



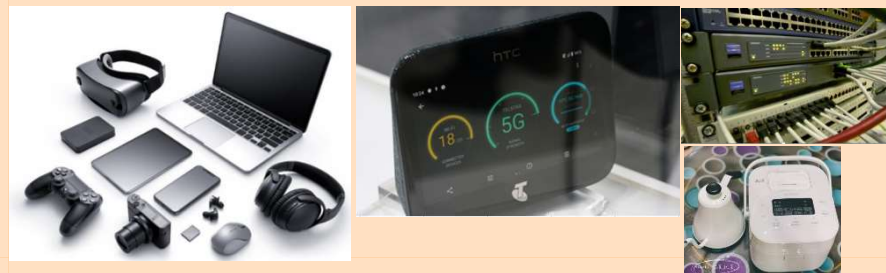
Greener and brighter 2022 New Product Application Field

E-Sports product



- ARGBW LED
- CS5050FRGB TOUCH ARGB LED
- MF192/MF195 SIGNAL CONTROL LED

White Goods/ Consumer electronics /5G server



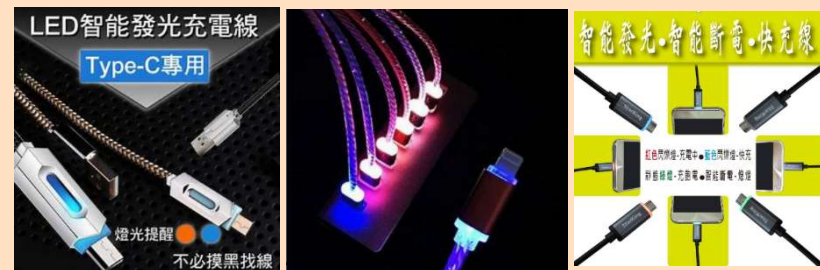
- ARGBW LED
- CS5050FRGB TOUCH ARGB LED
- MF192/MF195 SIGNAL CONTROL LED

Biosensor



- PD5050 sensitivity component

USB-C



- TVS150 LED

Our customers - Domestic

◆ ASKEY (亞旭)



◆ ASUS (華碩)



◆ CALCOMP (泰金寶)



◆ COMPAL (仁寶)



◆ CORSAIR (海盜船)



◆ DELTA (台達)



◆ FOXCONN (富士康)



◆ GIGABYTE (技嘉)



◆ HON HAI (鴻海)



◆ INVENTEC (英業達)



◆ LITE-ON IT (建興)



◆ MICRO-STAR (微星)



◆ PEGATRON (和碩)



◆ QUANTA (廣達)



◆ WISTRON (緯創)



Our customers - Global

◆ ARCELIK(BEKO) 

◆ BURY



◆ DELL



◆ ELECTROLUX



◆ FLEXTRONICS 

◆ GE



◆ GM



◆ H.P.



◆ HUMAX



◆ HYUNDAI



◆ HONEYWELL 

◆ JABIL



◆ KAON



◆ LANDIS+GYR

◆ MIELE



◆ MOBITEC



◆ PANASONIC



◆ RANGE ROVER  RANGE ROVER

◆ SONY



◆ VW



◆ VANMOOF



House Appliances

Greener and brighter

beko



Miele



House Appliances

Greener and brighter



Automotive

Greener and brighter

gogoro



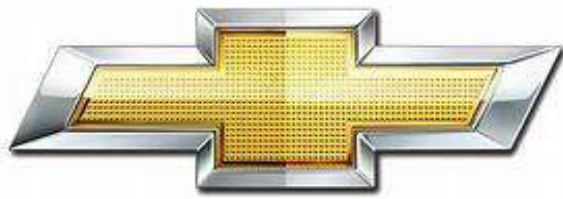
Automotive

Greener and brighter



Automotive

Greener and brighter



CHEVROLET





Cadillac



Display signs

Greener and brighter



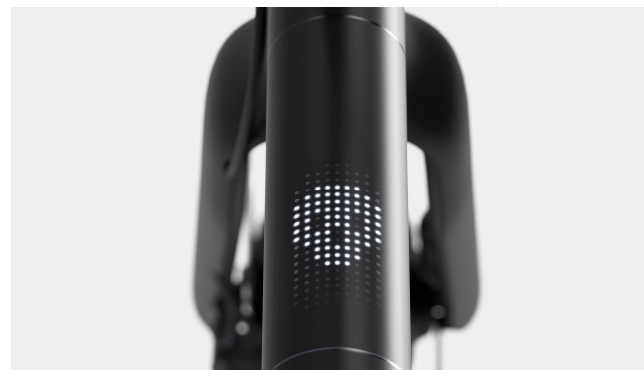
Gaming

Greener and brighter



E-bike LED module applications

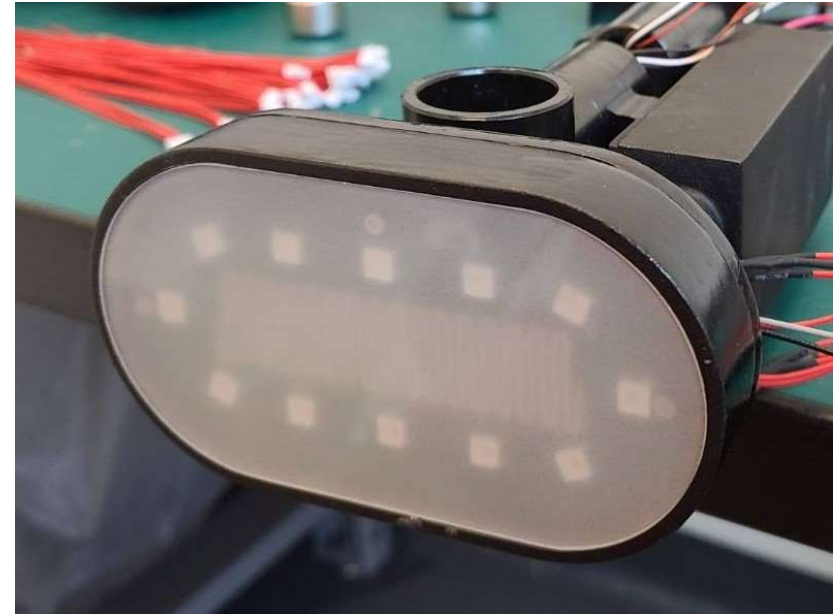
Greener and brighter



E-bike LED module applications

Greener and brighter

Power bank



E-bike outdoor lock



E-bike LED module applications

Greener and brighter

LIGITEK
立 基 電 子



**LED DISPLAY MOUDLE
E-BIKE**

1. 外圈:段數說明, 依序有1-5段
(DESCRIPTION OF THE NUMBER OF SEGMENTS, THERE ARE 1-5 SEGMENTS IN ORDER)
2. 內圈:電池量, 顯示從 0-25, 26-50, 51-75, 75-100
(BATTERY CAPACITY, FROM 0-25, 26-50, 51-75, 75-100)
3. 中間數字:車速顯示 (SPEED)
4. 下方數字顯示:電池量百分比 (BATTERY PERCENTAGE)
5. 開關電源:金屬天使眼按壓3-5秒
(PRESS THE METAL ANGELEYE FOR 3-5 SECONDS)



Gambling products

Greener and brighter



✂ size: 27" , 43" , 55" , 57" (Cutting screen)

LIGITEK

Why choose Ligitek?



- ✓ *Best Products with high quality!*
- ✓ *Best Services with affordable pricing!*
- ✓ *Your best partner in LED total solutions!*

Q&A

~END~

